

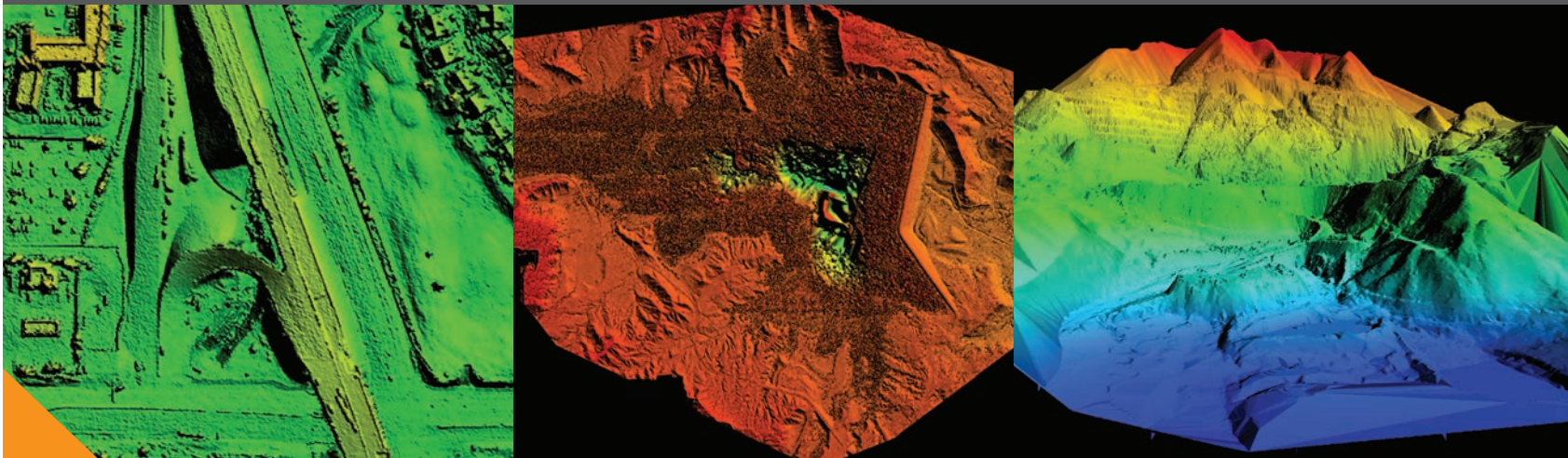
AEC SOLUTIONS

3D TERRAIN MODELS

Juniper Unmanned, Inc. builds high-resolution 3D terrain models to streamline planning and staging for projects of any size. Our goal is for our client's projects to run efficiently and safely, while saving time, money, and resources. 3D digital surface/terrain models (DSM/DTM) give our clients the ability to analyze potential design issues and assess the necessary level of effort before construction begins

3D Terrain Models support pre-planning on any project.

- Earthwork analysis/production tracking
- Site balance/haul planning
- Planning and progress reporting/final payments
- Stockpile volume calculations
- Inaccessible terrain mapping-steep, wooded and overgrown properties
- Construction “take-offs”
- Aerial site mapping – “as-builts”
- Asphalt overlay and pavement staging scenarios
- Drop structures for drainage
- Complex storm water drainage/storage
- Critical slope analysis



BENEFITS OF INTEGRATION OF UAS IN 3D TERRAIN MODELINGS

- Rapid and as-needed deployment
- Valuable pre-construction data
- Optimal jobsite productivity
- Improved worksite safety
- More efficient data acquisition
- Streamlined workflows and staging
- Avoid hazardous ground conditions
- Identify and resolve potential issues

Contact Juniper today to discover how we can support your projects, efficiently and cost effectively!